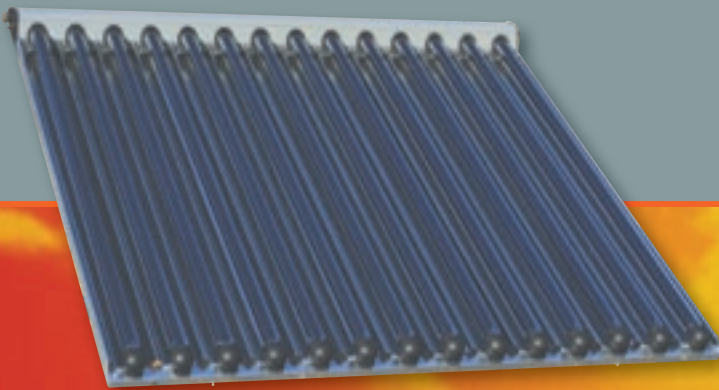


SONNENKRAFT.

Evacuated tube collector

Evacuated tube collector VK25



THE FUTURE OF ENERGY

www.sonnenkraft.com

Evacuated tube collector VK25

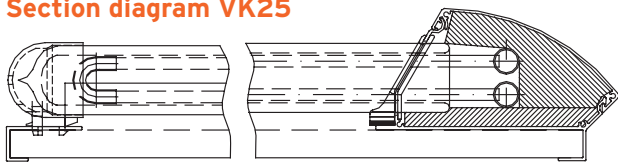
The evacuated tube collector VK25 with CPC reflector technology is a high-performance product, with a proven track record. The collector's evacuated tubes mean heat transfer to the solar loop is extremely efficient.

Specifications VK25

Name	VK25
Collector type	evacuated tube collector
Installation type	roof mounted
Gross surface area	2.57m ²
Opening surface area	2.21m ²
Absorber surface area *	2.36m ²
Height	1647mm
Width	1560mm
Depth	107mm
Empty weight	42kg
Collector capacity	2.3l
Connections	3/4" flat sealing
Absorber	aluminium
Wiring	direct flow U pipes (Cu pipes in evacuated tubes), parallel switching
Absorption (α)	0.96
Emission (ε)	0.06
Housing	aluminium
Heat insulation	tube: evacuated; collector: mineral wool
Collector glazing	evacuated tubes (borosilicate glass)
No. plates	14 evacuated tubes
Conversion factor η ₀	0.64
Angle correction factor K _{50°}	0.947
Minimum output	525kWh/(m ² a)
Max. operating pressure	10bar
Idle temperature	270° C plus ambient temperature
Recommended throughput	ca. 15 - 30l/h per m ²
Module wiring	max. 6 in series
Min. collector angle	15°
Max. collector angle	75°

*) jacket surface area of inner tubes

Section diagram VK25



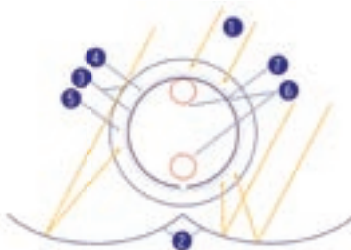
Dimensions VK25

Hot water:
1 - 1.5m² per person

backup heating unit:
per m² collector approx. 100l storage capacity

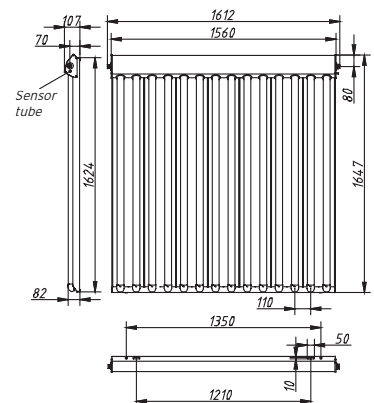


Schematic illustration VK25



- 1 Solar radiation
- 2 CPC reflector
- 3 Evacuated tube
- 4 Highly selective coating
- 5 Vacuums - the best insulation
- 6 Copper pipes
- 7 Heat transfer plate

Dimensions VK25

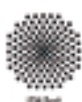
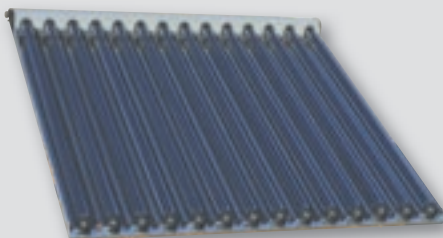


Installation VK25

Recommended collector angle at least approx. 30° (produces self-cleaning effect/minimises pressure from snow). Installation in areas with heavy snowfall or hailstone levels is not recommended. Do not install any fittings as flow volume gauges or other items upstream of heat exchanger in collector flow system or near to collector as there is a risk of overheating. Instead, please use evacuated tube collector sensor SKSPT1000V.

Features of evacuated tube collector VK25

- Higher output due to vacuum insulation
- High temperatures - even in poor weather conditions
- High output due to exploitation of diffuse and oblique radiation via CPC reflector and circular evacuated tube absorber
- Simple maintenance - tubes can be changed without having to empty solar loops.
- Simple assembly process - low assembly costs
- High output even at lower outside temperatures



Registration number VK25 01-75115 R

Subject to typesetting and printing errors.
Technical changes may be made without prior notice.

Edition: 2007/12