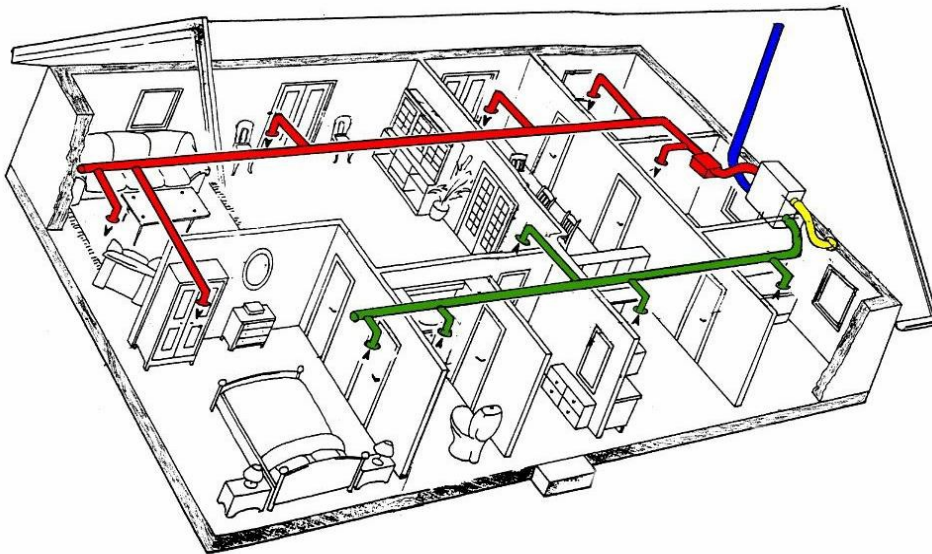


Case Studies

New Developments



ISO Energy have been commissioned to install renewable energy systems into a cross section of new developments to achieve Code Level 3 in line with UK Building Regulations.

Commissions are diverse covering social housing schemes at one end of the market to unique up market country-side heritage developments.

At present we are undertaking the following:

Spa Road, London. 157 units
Lambeth Hospital, Lambeth 112 Units
Walpole Street, London. 82 Units

The social housing developments will be fitted with a Nilan MVHR heat pump (VP18UK). There is an integral cylinder, a CTS 600 control unit, wall terminations, plastic flat ducting, flexible connections to grilles and flexible connections to top of heat recovery unit.

NILAN MVHR Heat Pump

Ducting



Ducting

